

Baby Leaves

Size: Newborn (approx 15" around)

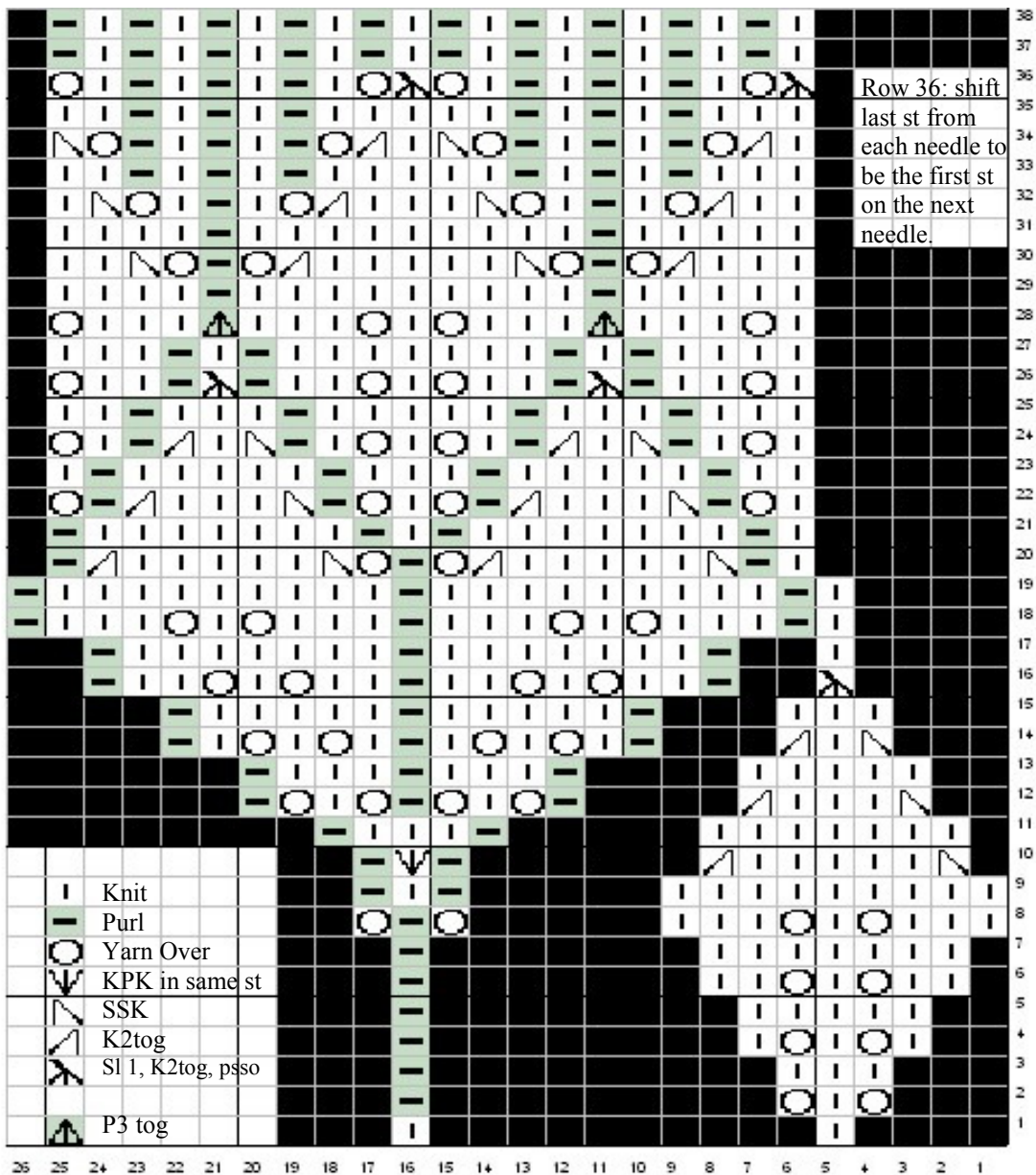
Materials: Dreambaby DK from the Plymouth Brand Collection (50% Microfiber Acrylic, 50% Nylon), 1set (5) size 4 US (3.5 mm) dpns

Cast on 8 sts. Join, being careful not to twist, and work in the round following chart. Repeat each row 4 times.

- Row 1: K2
- Row 2: YO, K1, YO, P1
- Row 3: K3, P1
- Row 4: K1, YO, K1, YO, K1, P1
- Row 5: K5, P1
- Row 6: K2, YO, K1, YO, K2, P1



Designed by: Paula Dean Nevison



Row 7: K7, P1
 Row 8: K3, YO, K1, YO, K3, YO, P1, YO
 Row 9: K9, P1, K1, P1
 Row 10: SSK, K5, K2tog, P1, inc 2, P1 (inc 2 means to K, P, K in the same stitch)
 Row 11: K7, P1, K3, P1
 Row 12: SSK, K3, K2tog, (P1, YO, K1, YO) twice, P1
 Row 13: K5, (P1, K3) twice, P1
 Row 14: SSK, K1, K2tog, (P1, K1, YO, K1, YO, K1) twice, P1
 Row 15: K3, (P1, K5) twice, P1
 Row 16: Sl 1, K2tog, pssso; (P1, K2, YO, K1, YO, K2) twice, P1
 Row 17: K1, (P1, K7) twice, P1
 Row 18: K1, (P1, K3, YO, K1, YO, K3) twice, P1
 Row 19: K1, (P1, K9) twice, P1
 Row 20: K1, P1, SSK, K5, K2tog, YO, P1, YO, SSK, K5, K2tog, P1
 Row 21: (K1, P1, K7, P1) twice
 Row 22: (K1, YO, P1, SSK, K3, K2tog, P1, YO) twice
 Row 23: (K2, P1, K5, P1, K1) twice
 Row 24: (K1, YO, K1, P1, SSK, K1, K2tog, P1, K1, YO) twice
 Row 25: (K3, P1, K3, P1, K2) twice
 Row 26: (K1, YO, K2, P1, Sl 1, K2tog, pssso, P1, K2, YO) twice
 Row 27: (K4, P1, K1, P1, K3) twice
 Row 28: (K1, YO, K3, P3tog, K3, YO) twice
 Row 29: (K5, P1, K4) twice
 Row 30: (K3, K2tog, YO, P1, YO, SSK, K2) twice
 Row 31: (K5, P1, K4) twice
 Row 32: (K2, K2tog, YO, K1, P1, K1, YO, SSK, K1) twice
 Row 33: [K3, P1, (K1, P1) twice, K2] twice
 Row 34: [K1, K2tog, YO, P1, (K1, P1) twice, YO, SSK] twice
 Row 35: [K3, P1, (K1, P1) twice, K2] twice
 Row 36: shift last stitch from each needle to be the first stitch on the next needle
 [Sl 1, K2tog, pssso, YO, K1, (P1, K1) 3 times, YO] twice
 Row 37: (K1, P1) repeat around
 Row 38: BO in K1, P1 pattern or continue in pattern for 14 more rows then BO.